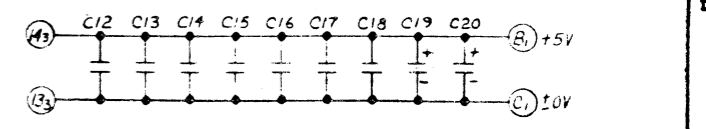
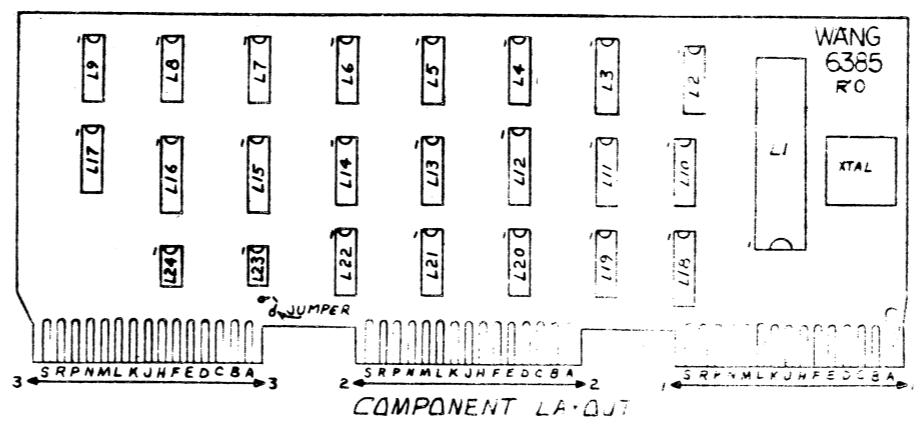


| LOCATION | TYPE | W.L. PART NO. | TERM. NO. ±0V | TERM. NO. Vcc+5V | QTY. |
|-------------|----------|---------------|---------------|------------------|------|
| L1 | TRI4C2A | 377-0071 | 3 | 1 | 1 |
| L2,10,17,22 | SN7404N | 376-0010 | 7 | 14 | 4 |
| L3,12,15,16 | SN7493N | 376-0053 | 8 | 16 | 4 |
| L4-9 | SN7493N | 376-0011 | 10 | 5 | 6 |
| L11 | SN7453N | 376-0057 | 7 | 14 | 1 |
| L13,21 | SN7416N | 376-0055 | 7 | 14 | 2 |
| L14,19 | SN7400N | 376-0002 | 7 | 14 | 2 |
| L18 | SN75154N | 376-0077 | 8 | 15/16 | 1 |
| L20 | SN7410N | 376-0003 | 7 | 14 | 1 |
| L23,24 | SN75150P | 376-0076 | 4 | 8/5 | 2 |

| COMPONENT | SIZE/TYPE | W.L. PART NO. | QTY. |
|--------------|----------------|---------------|------|
| R1,3 | 220Ω 1/4W | 330-2022 | 2 |
| R2 | 1.8K 1/4W | 330-3018 | 1 |
| R4 | 180Ω 1/4W | 330-2018 | 1 |
| R5,7,9,12-15 | 1K 1/4W | 330-3010 | 8 |
| R6,10,11,16 | 4.7K 1/4W | 330-3047 | 4 |
| C2 | 47pF CER | 300-1047 | 1 |
| C3 | 150pF CER | 300-1150 | 1 |
| C4-8,10 | .01μF 25V CER | 300-1903 | 6 |
| C9,11,19,20 | 15μF 20V TANT | 300-4022 | 4 |
| C12-18 | .05μF 12V CER | 300-1900 | 7 |
| XTAL | BMC .05% BLUEY | 321-0009 | 1 |
| D1,2 | DIODE GER. | 380-0000 | 2 |
| R17 | 10K 1/4W | 330-4010 | 1 |



| REVISION | DATE | BY | CHK |
|----------|---------|----|-----|
| 1 | 3-10-75 | | |

E-REV
1

| | | | |
|---|---------------|-----|------|
| WANG LABORATORIES INC. NEWBURGH, MASS. | | | |
| MODEL NO. | DRAWN | APP | DATE |
| TESTER | CHECKED | APP | DATE |
| WALL SCHEMATIC LOGIBLOC FOR ECHO TRANSMIT AND RECEIVE | | | |
| SHT 4 OF 6 | DWG. NO. 6385 | REV | |