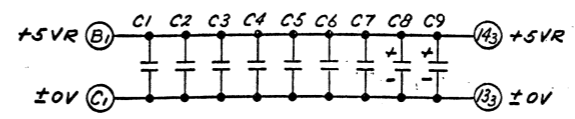


I.C. LOCATION	TYPE	W.L. NO.	TERM FOR ±0V	TERM FOR VCC +5VR	QTY.
L11,16,17,21	SN7400N	376-0002	7	14	4
L19	SN7401N	376-0015	7	14	1
L8	SN7402N	376-0016	7	14	1
L9,10,14	SN7404N	376-0010	7	14	3
L22	SN7410N	376-0003	7	14	1
L6	SN7420N	376-0004	7	14	1
L13,23	SN7442N	376-0008	8	16	2
L1,12	SN74145	376-0069	8	16	2
L5	SN7451N	376-0012	7	14	1
L7	SN7453N	376-0057	7	14	1
L20	SN7474N	376-0006	7	14	1
L2,4	SN7476N	376-0007	13	5	2
L18	SN7486N	376-0036	7	14	1
L15	F9935	376-0025	7	14	1
L3	F9946	376-0023	7	14	1

COMPONENT	TYPE & SIZE	W.L. NO.	QTY.
R1,2,3,4,5	1K 1/4W	330-3010	5
R6	680Ω 1/4W	330-2068	1
R7	2.2K 1/4W	330-3022	1
R8	10K 1/4W	330-4010	1
C1,2,3,4,5,6,7	.05μF 12V CER.	300-1900	7
C8,9	10μF 15V ELECT.	300-3006	2



IDENT	QTY	NAME	MATERIAL	DESCRIPTION
				DR F.S.S. DATE 2-16-72
				CHK DATE
				APPD DATE 3/17/72
				SCALE SHEET OF
				TITLE SCHEMATIC LOGIBLOC * 6192-1 ALU
				D 6192-1
				PART NUMBER REV SIZE DRAWING NUMBER

NO.	REVISION

D 6192-1