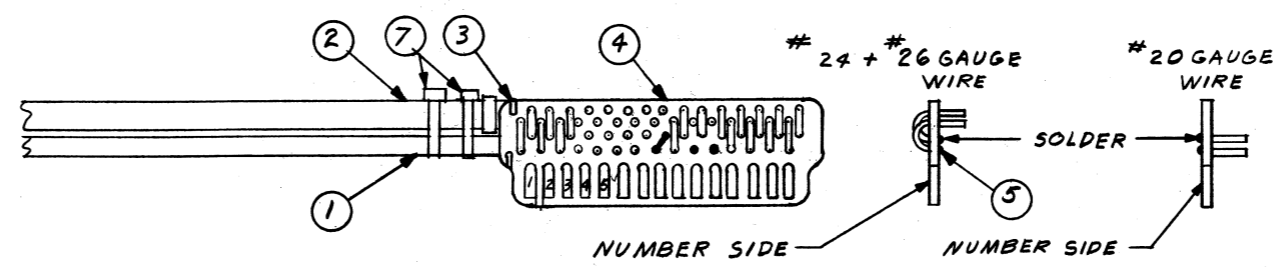
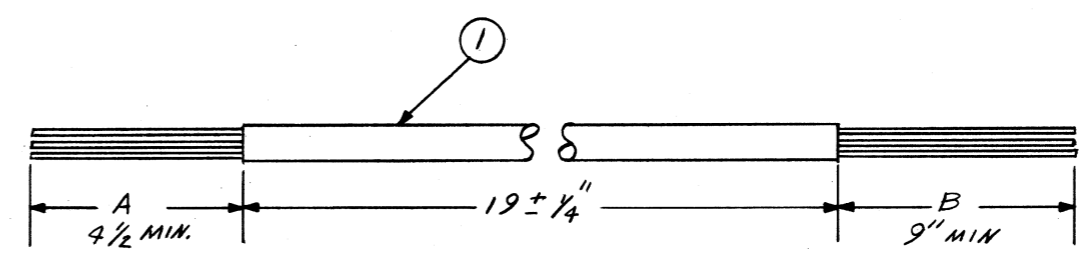
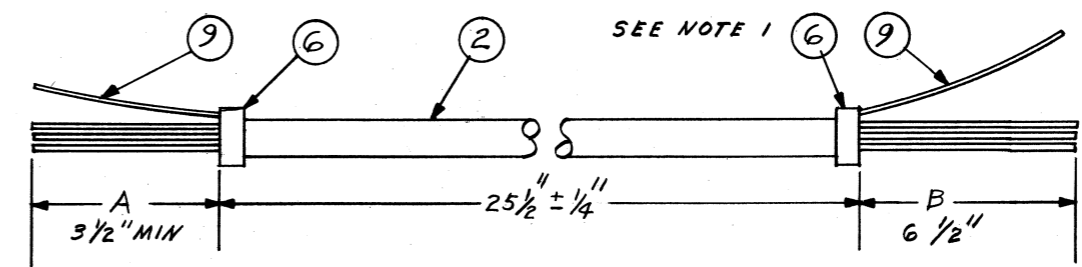


REVISIONS
 REVISED: PER E.C. #3088 F.S.S. 7-7-72 APP'D SKH
 REVISED: PER ECN #3182 & B-28-72 APP'D SKH
 REVISED: PER ECN #3433 & 12-15-72 APP'D DW



TO SIGNAL SOLDER PT	WIRE LENGTH		WIRE NO. OR COLOR	FROM 5223 PIN NO.	REMARKS
	A	B			
ROP	1 3/8"	4 5/8"	1	1	
RTCK	1 1/2"	4 1/2"	2	2	
RDK	1 5/8"	6 1/4"	3	3	
				4	
				5	
				6	
				7	
				8	#24 BUSS TO J
+12V	2 1/2"	1 3/4"	4	9	
CH GND	3	1 3/4"	GREEN	10	
-12VR	3	1 1/2"	5	11	
+26VR	3 1/2"	6"	YELLOW	12	
FSR	3 5/8"	8 1/2"	BROWN	13	
RSR	3 3/4"	7 1/4"	ORANGE	14	
HIR	3 7/8"	7"	BLUE	15	
				A	
				B	
				C	
				D	
				E	
				F	
				H	
±0V	2 1/4"	2 1/2"	SHIELD	J	#20 BLACK
+5VR	2 3/4"	2"	9 AND 10	K	
24VAC	—	—	—	L	#24 BUSS TO M
24VAC	3 1/4"	5 1/4"	BLACK	M	
24VAC	3 3/8"	5 1/4"	WHITE	N	
M ₁ X _R	3 1/2"	4 1/4"	GRAY	P	
M ₂ X _R	3 5/8"	4 1/2"	VIOLET	R	
CAPST	3 3/4"	4"	RED	S	



NOTE:
 1. TO INSTALL ITEM 6 USE T&B TOOL NO. WT640 WITH DIE NO. 6403. ADJUST TOOL TO A GAP OF .200

ITEM	QTY	NAME	W. L. PART NO.	DESCRIPTION
1	33"	CABLE	420-0038	10 COND #22 GAUGE
2	36	CABLE	420-0032	10 COND #28 GAUGE SHIELDED
3	A/R	LACING	605-1001	BLACK
4	1	P.C. BOARD	510-5223	FINGER BOARD
5	A/R	SOLDER	660-0202	G3/37
6	2	SH. TERM.	654-0058	T&B #RSK300 YELLOW
7	2	PAN-TY	605-1004	PLTIM-M
8	A/R	BUSS	600-9007	#24 GAUGE
9	A/R	WIRE	600-0500	#20 GAUGE BLACK

WANG LABORATORIES INC.
 TEWKSBURY, MASS.

MODEL NO. 1200
 DRAWN AB 6/13/72
 CHECKED [] APP. []

TITLE
 CABLE RIGHT TAPE DECK
 W.L. 220-0081

W.O. NO. SHT 3 OF 5
 DWG. NO. C 6165-1
 REV. 3

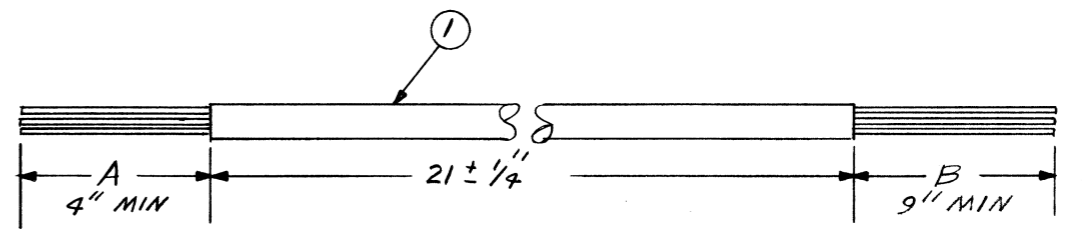
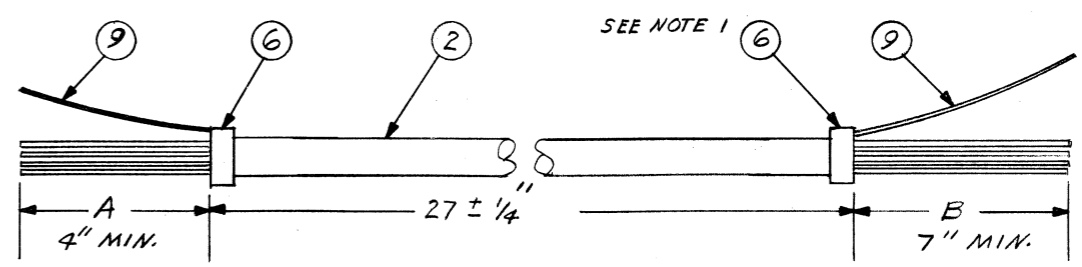
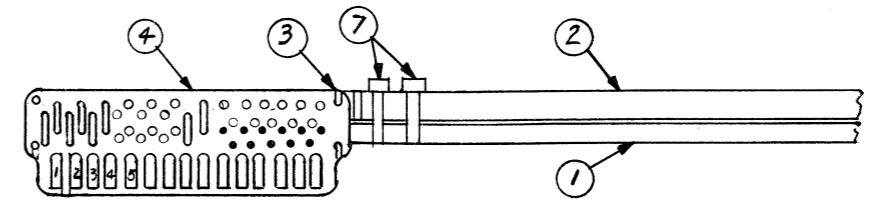
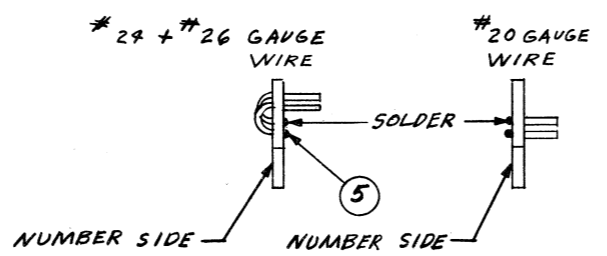
E
D
C
B
A

U
D
C
B
A

7 6 5 4 3 2 1

ON DWG

REVISIONS	
REVISED PER	E.C. #3088 F.S.S.
7-7-72	APPD SWH
REVISED PER	ECN #3432
12-15-72	APPD OW



NOTE:
1. TO INSTALL ITEM 6 USE T&B TOOL NO. WT 640 WITH DIE NO. 6403
ADJUST TOOL TO A GAP OF .200

TO SIGNAL SOLDER PT	WIRE LENGTH		WIRE NO. OR COLOR	FROM 5223 PIN NO.	REMARKS
	A	B			
LOP	3 3/8"	6 3/8"	1	1	
LTCK	3 1/8"	5 1/4"	2	2	
LDK	3"	5 1/2"	3	3	
				4	
				5	
				6	
				7	
				8	*24 BUSS TO J
+12V	2 1/8"	1 3/4"	4	9	
CH GND	1 3/4"	1 3/4"	GREEN	10	
-12VR	1 7/8"	1 1/2"	5	11	
+26VR	1 3/4"	6 1/2"	YELLOW	12	
FSL	1 5/8"	8 1/2"	BROWN	13	
RSL	1 1/2"	8 3/4"	ORANGE	14	
HIL	1 3/8"	6 1/4"	BLUE	15	
RCL0	3 1/2"	6 1/2"	6	A	
DIL1	3 1/4"	5 3/8"	7	B	
DIL0	3 1/8"	5 3/4"	8	C	
				D	
				E	
				F	
				H	
±0V	2 1/4"	2 3/4"	SHIELD	J	*20 BLACK
+5VR	2 3/4"	2"	9 AND 10	K	
24VAC				L	*24 BUSS TO M
24VAC	2"	5 1/4"	BLACK	M	
24VAC	1 7/8"	5 1/4"	WHITE	N	
M1 XL	1 3/4"	4 3/4"	GRAY	P	
M2 XL	1 5/8"	5"	VIOLET	R	
CAPST	1 1/2"	4"	RED	S	

ITEM	QTY	NAME	W.L.	PART NO.	DESCRIPTION
1	35"	CABLE	420-0038	10 COND. #22 GAUGE	
2	39"	CABLE	420-0032	10 COND. #28 GAUGE SHIELDED	
3	A/R	LACING	605-1001	BLACK	
4	1	P.C. BD.	510-5223	FINGER BOARD	
5	A/R	SOLDER	660-0202	63/37	
6	2	SH. TERM.	654-0058	T&B RSK300 YELLOW	
7	-	PAN-TY	605-1004	PLTIM-M	
8	A/R	BUSS	600-9007	*24 GAUGE	
9	A/R	WIRE	600-0500	*20 GAUGE BLACK	

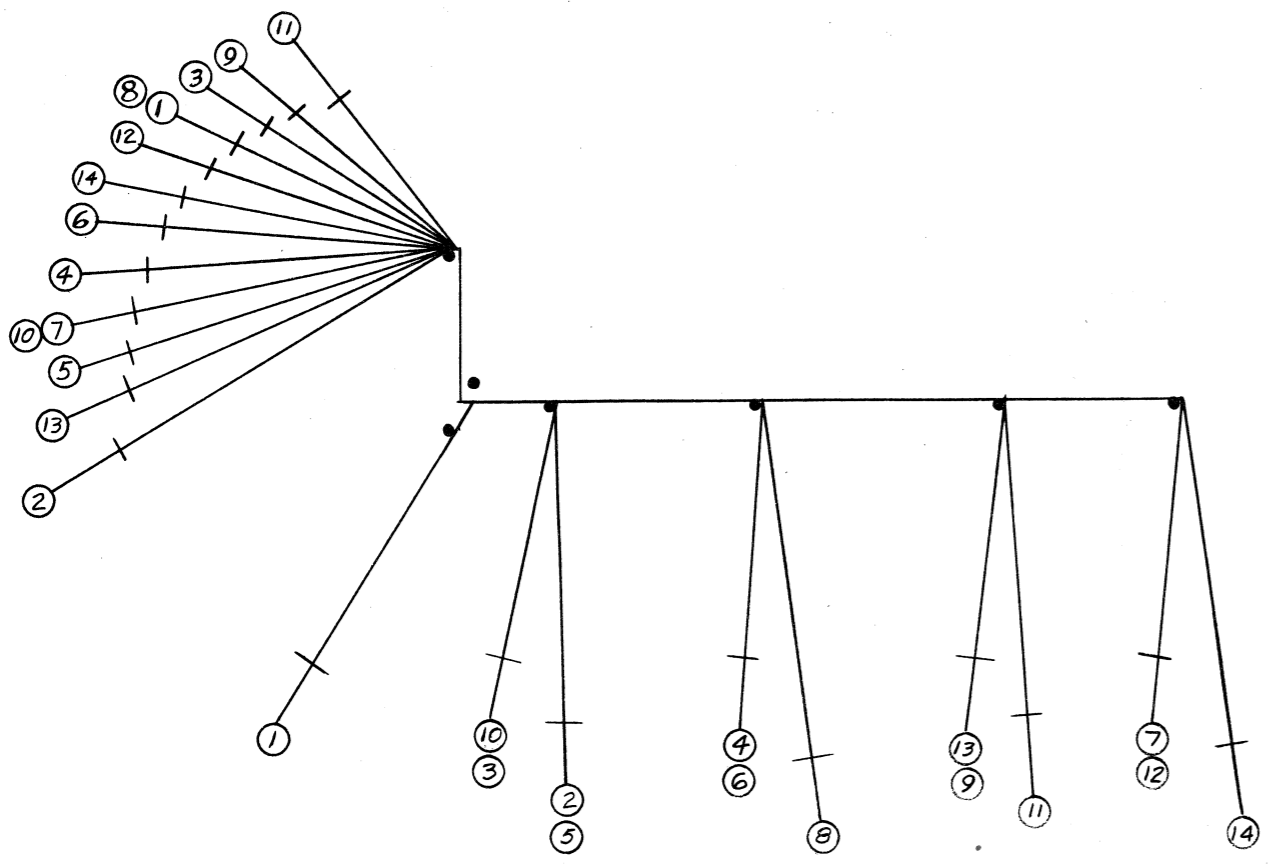
WANG LABORATORIES INC.
TEWKSBURY, MASS.

MODEL NO.	DRAWN	6/13/72	APP.	OW	6-4-72
1200	CHECKED		APP.		

TITLE
CABLE LEFT TAPE DECK
W.L. 220-0080

W.O. NO.	DWG. NO.	REV.
SHT 4 OF 5	C 6165-1	3

E
D
C
B
A



WIRE RUN LIST

WIRE	SIZE	COLOR
1	24	WHITE/BROWN
2	24	ORANGE
3	24	YELLOW
4	24	WHITE/RED
5	24	VIOLET
6	24	GRAY
7	24	WHITE/ORANGE
8	18	WHITE
9	18	RED
10	24	WHITE/YELLOW
11	24	BLUE
12	24	BROWN
13	24	WHITE/GREEN
14	24	GREEN

REV.	BY	DATE	REVISIONS
1	OB	6-18-72	PER ECN # 3677 RED AND WHITE WIRES WERE #20 GA APP'D SKH

A/R	PAN-TY	605-1004	PLT/M-M	
A/R	WIRE	600-0009	#18 WHITE	
A/R	WIRE	600-0002	#18 RED	
A/R	WIRE	600-2095	#24 WHITE/GREEN	
A/R	WIRE	600-2094	#24 WHITE/YELLOW	
A/R	WIRE	600-2093	#24 WHITE/ORANGE	
A/R	WIRE	600-2092	#24 WHITE/RED	
A/R	WIRE	600-2091	#24 WHITE/BROWN	
A/R	WIRE	600-2008	#24 GRAY	
A/R	WIRE	600-2007	#24 VIOLET	
A/R	WIRE	600-2006	#24 BLUE	
A/R	WIRE	600-2005	#24 GREEN	
A/R	WIRE	600-2004	#24 YELLOW	
A/R	WIRE	600-2003	#24 ORANGE	
A/R	WIRE	600-2001	#24 BROWN	
IDENT	QTY	NAME	W/L PART NO.	DESCRIPTION

WANG LABORATORIES INC.
TEWKSBURY, MASS.

MODEL NO. 1200	DRAWN OB	DATE 6/13/72	APP. OB	REV. 6-14-72
CHECKED			APP.	
TITLE PANEL TRANSISTOR CABLE				
W.O. NO. SHT 5 OF 5	DWG. NO. C 6165-1	REV.		