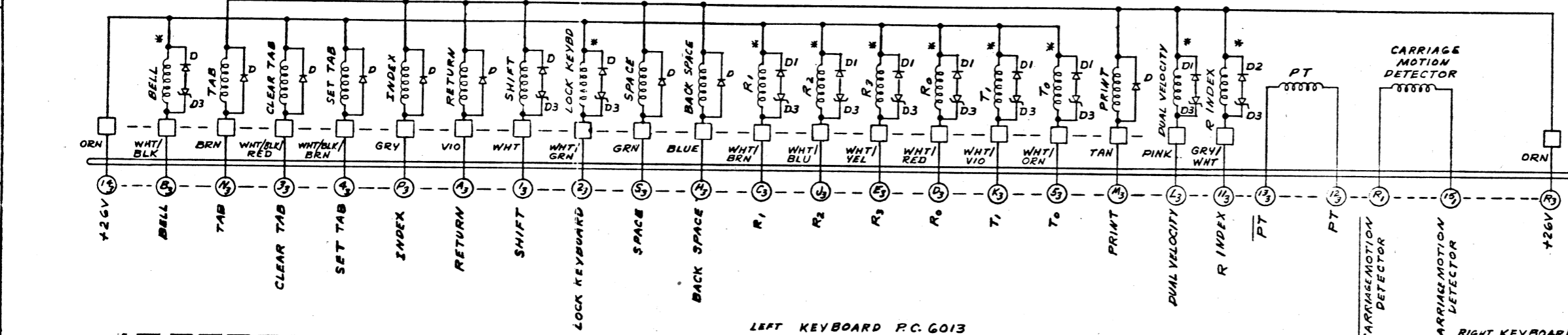
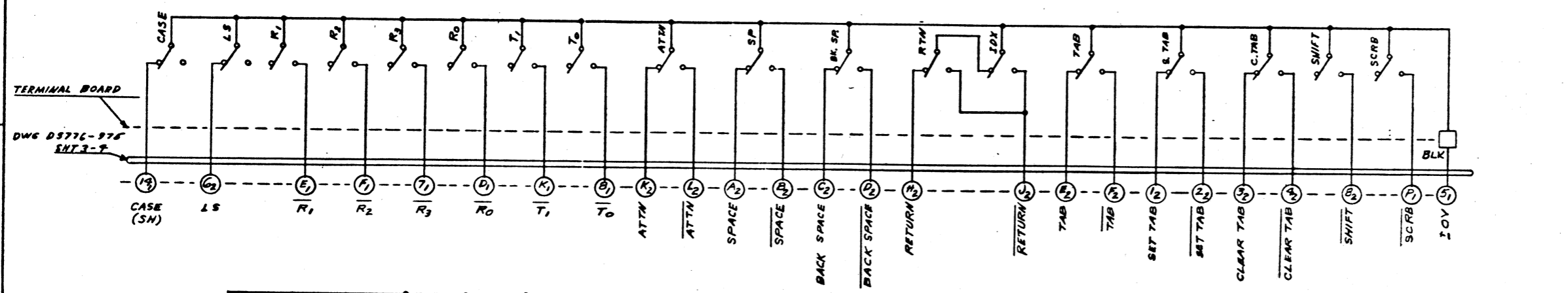
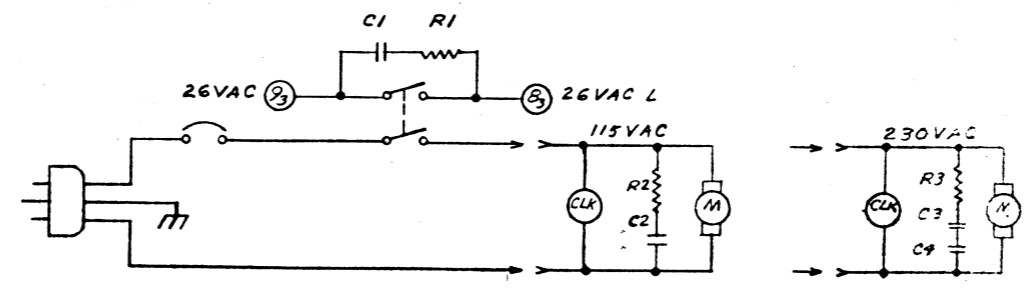
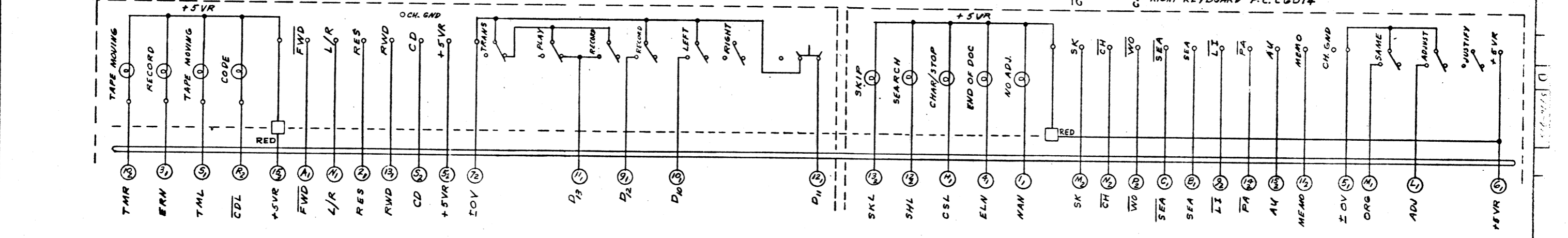


○ CONNECTOR - SEE DWG. D5776-975, SMT. 3
 □ TERMINAL BOARD - SEE DWG. A6382-1
 SWITCHES, SOLENOIDS, LAMPS, SEE DWG. D5776-940



| COMP. | SIZE/TYPE | W.L. PART No. | QTY |
|--------|--------------|---------------|-----|
| R1 | 100Ω 1/2W | 331-2010 | 1 |
| R2 | 33Ω 1/2W | 331-1033 | 1 |
| R3 | 68Ω 1/2W | 331-1068 | 1 |
| C1 | .1μF 50V | 300-2310 | 1 |
| C2,3,4 | 47μF 60V | 300-2348 | 3 |
| D1 | 1N4007 DIODE | 380-1005 | 7 |
| D | 5/16 DIODE | 380-1004 | 11 |
| CLOCK | .15VAC 60Hz | 665-0004 | 1 |
| | 115VAC 50Hz | 665-0005 | 1 |
| | 220VAC 60Hz | 665-0006 | 1 |
| | 220VAC 50Hz | 665-0007 | 1 |
| D2 | EM-03 | 380-6000 | 1 |
| D3 | 1N750A 5.1V | 380-2002-1 | 11 |
| * REF. | LEDEL | 320-1013 | 10 |



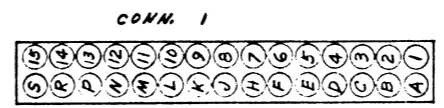
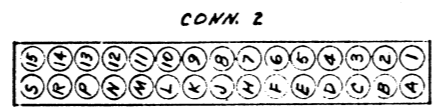
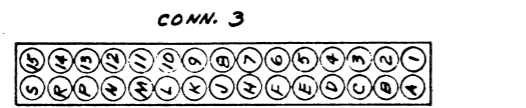
| REV. | DATE | BY | CHKD. | DESCRIPTION |
|------|---------|-----|-------|-------------------------|
| 1 | 6-9-72 | AFM | | REVISED PER ECN #2979 |
| 2 | 6-11-72 | AFM | | APPLIED ACROSS AC INPUT |
| 3 | 6-11-72 | AFM | | APPLIED SKH |
| 4 | 6-11-72 | AFM | | APPLIED SKH |
| 5 | 6-11-72 | AFM | | APPLIED SKH |
| 6 | 6-11-72 | AFM | | APPLIED SKH |
| 7 | 6-11-72 | AFM | | APPLIED SKH |
| 8 | 6-11-72 | AFM | | APPLIED SKH |
| 9 | 6-11-72 | AFM | | APPLIED SKH |
| 10 | 6-11-72 | AFM | | APPLIED SKH |
| 11 | 6-11-72 | AFM | | APPLIED SKH |
| 12 | 6-11-72 | AFM | | APPLIED SKH |
| 13 | 6-11-72 | AFM | | APPLIED SKH |

SHEETS 2 & 3 ARE "D" SIZE
 SHEET 4 OF 4 IS "E" SIZE

WANG LABORATORIES INC.
 TEWKSBURY, MASS.

MODEL NO. 1200
 DRAWN: [Signature]
 CHECKED: [Signature]
 TITLE: SCHEMATIC, TYPEWRITER

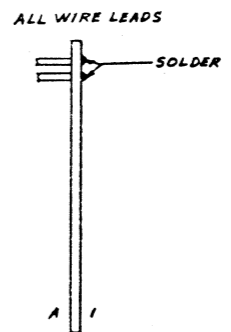
SHT 1 OF 4
 DWG. NO. D 5776-975



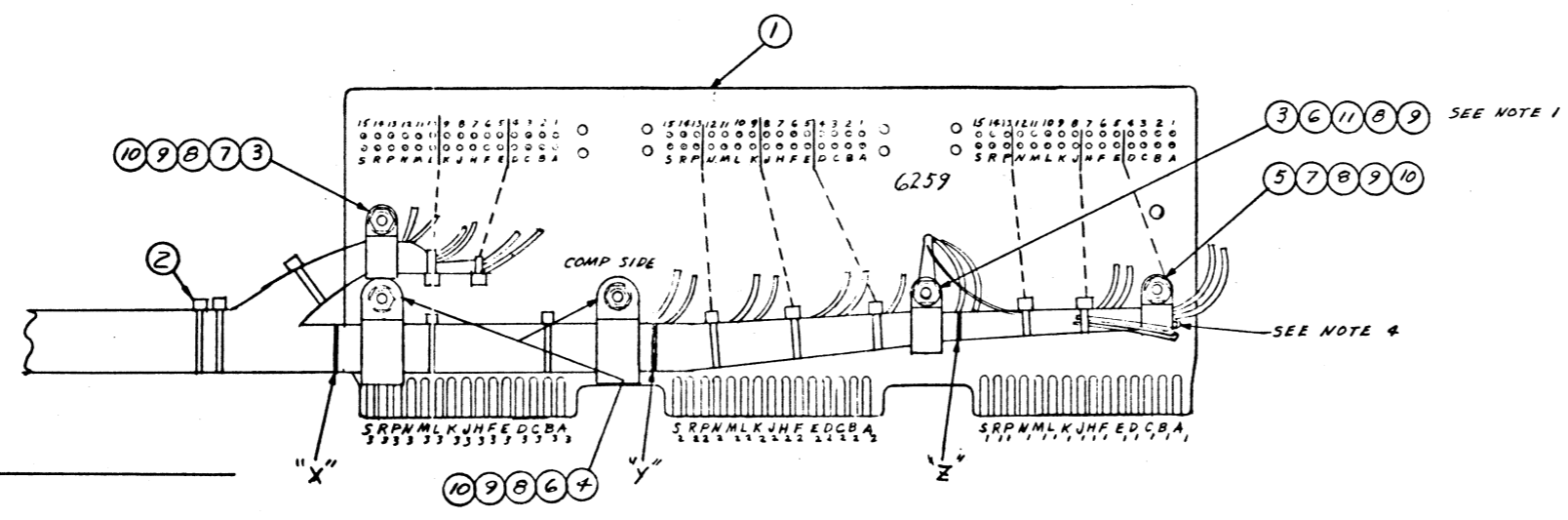
| SIGNAL | WIRE COLOR OR NUMBER | 6259 PIN NO. | WIRE SIZE | W.L. PART NO. | LENGTH |
|--------------------|----------------------|--------------|-----------|---------------|--------|
| — | — | 15 | — | — | — |
| SPT ₅ | GREEN | 5 | #24 | 600-2005 | 5 1/2' |
| +26V | ORANGE | 14 | #24 | 600-2003 | 5 1/2' |
| +26V | ORANGE | R | #24 | 600-2003 | 5 1/2' |
| PT | LEFT COAX-BLK | 13 | — | — | — |
| INDEX ₅ | GRAY | P | #24 | 600-2008 | 5 1/2' |
| PT | LEFT COAX-CLR | 12 | — | — | — |
| TAB ₅ | BROWN | N | #24 | 600-2001 | 5 1/2' |
| IS | GRY/WHT | 11 | #22 | 600-1098 | 5 1/2' |
| PRINT ₅ | TAN | M | #24 | 600-2011 | 5 1/2' |
| ±0V | LEFT COAX-SHLD | 10 | — | — | — |
| DVS | PINK | L | #24 | 600-2022 | 5 1/2' |
| 26VAC | YELLOW | 9 | #18 | 600-0004 | 5 1/2' |
| To ₁₅ | WHT/VIO | K | #24 | 600-2097 | 5 1/2' |
| 26VAC | YELLOW | 8 | #18 | 600-0004 | 5 1/2' |
| Ro ₂₅ | WHT/BLU | J | #24 | 600-2096 | 5 1/2' |
| — | — | 7 | — | — | — |
| BS ₅ | BLUE | H | #24 | 600-2006 | 5 1/2' |
| — | — | 6 | — | — | — |
| CH GND | GRN/YEL | F | #18 | 600-0054 | 5 1/2' |
| To ₀₅ | WHT/ORN | 5 | #24 | 600-2093 | 5 1/2' |
| Ro ₃₅ | WHT/YEL | E | #24 | 600-2094 | 5 1/2' |
| SET TAB | WHT/BLK/BRN | 4 | #24 | 600-2901 | 5 1/2' |
| Ro ₀₅ | WHT/RED | D | #24 | 600-2092 | 5 1/2' |
| CLR TAB | WHT/BLK/RED | 3 | #24 | 600-2902 | 5 1/2' |
| Ro ₁₅ | WHT/BRN | C | #24 | 600-2091 | 5 1/2' |
| KBL ₅ | WHT/GRN | 2 | #24 | 600-2095 | 5 1/2' |
| BEL ₅ | WHT/BLK | B | #24 | 600-2090 | 5 1/2' |
| SHT ₅ | WHITE | 1 | #24 | 600-2009 | 5 1/2' |
| CRS | VIOLET | A | #24 | 600-2007 | 5 1/2' |

| SIGNAL | WIRE COLOR OR NUMBER | 6259 PIN NO. | WIRE SIZE | W.L. PART NO. | LENGTH |
|--------|----------------------|--------------|-----------|---------------|--------|
| AU | R.K.B. CABLE-6 | 15 | — | — | — |
| CD | L.K.B. CABLE-5 | 5 | — | — | — |
| PA | R.K.B. CABLE-5 | 14 | — | — | — |
| CDL | VIO/YEL | R | #24 | 600-2074 | 8 1/2' |
| SKL | GRY/BRN | 13 | #24 | 600-2081 | 7 1/2' |
| WO | R.K.B. CABLE-11 | P | — | — | — |
| SHL | GRY/GRN | 12 | #24 | 600-2085 | 7 1/2' |
| CH | R.K.B. CABLE-9 | N | — | — | — |
| MEMO | R.K.B. CABLE-8 | 11 | — | — | — |
| SK | R.K.B. CABLE-13 | M | — | — | — |
| TMR | VIO/RED | 10 | #24 | 600-2072 | 8 1/2' |
| ATTN | MAIN CABLE-21 | L | — | — | — |
| LT | R.K.B. CABLE-7 | 9 | — | — | — |
| ATTN | MAIN CABLE-22 | K | — | — | — |
| SHP | MAIN CABLE-5 | 8 | — | — | — |
| CR/LFI | MAIN CABLE-19 | J | — | — | — |
| ±0V | L.K.B. CABLE-12 | 7 | — | — | — |
| CR/LFI | MAIN CABLE-20 | H | — | — | — |
| LIS | MAIN CABLE-23 | 6 | — | — | — |
| TABT | MAIN CABLE-13 | F | — | — | — |
| +5VR | L.K.B. CABLE-3&4 | 5 | — | — | — |
| TABT | MAIN CABLE-14 | E | — | — | — |
| CPT | MAIN CABLE-3 | 4 | — | — | — |
| BK SPT | MAIN CABLE-17 | D | — | — | — |
| CPT | MAIN CABLE-4 | 3 | — | — | — |
| BK SPT | MAIN CABLE-18 | C | — | — | — |
| STAB | MAIN CABLE-1 | 2 | — | — | — |
| SPT | MAIN CABLE-15 | B | — | — | — |
| STAB | MAIN CABLE-2 | 1 | — | — | — |
| SPT | MAIN CABLE-16 | A | — | — | — |

| SIGNAL | WIRE COLOR OR NUMBER | 6259 PIN NO. | WIRE SIZE | W.L. PART NO. | LENGTH |
|--------|----------------------|--------------|-----------|---------------|--------|
| MD | RIGHT COAX-CLR | 15 | — | — | — |
| TML | VIO/ORN | 5 | #24 | 600-2073 | 8 1/2' |
| SH | MAIN CABLE-24 | 14 | — | — | — |
| MD | RIGHT COAX-BLK | R | — | — | — |
| RWD | L.K.B. CABLE-8 | 13 | — | — | — |
| SCRB | MAIN CABLE-6 | P | — | — | — |
| D11 | L.K.B. CABLE-12 | 12 | — | — | — |
| L/R | L.K.B. CABLE-7 | N | — | — | — |
| D13 | L.K.B. CABLE-11 | 11 | — | — | — |
| ORG | R.K.B. CABLE-14 | M | — | — | — |
| D10 | L.K.B. CABLE-9 | 10 | — | — | — |
| ADJ | R.K.B. CABLE-15 | L | — | — | — |
| D12 | L.K.B. CABLE-10 | 9 | — | — | — |
| T12 | MAIN CABLE-9 | K | — | — | — |
| To2 | MAIN CABLE-12 | B | — | — | — |
| — | — | J | — | — | — |
| R32 | MAIN CABLE-8 | 7 | — | — | — |
| CSL | GRY/RED | H | #24 | 600-2082 | 7 1/2' |
| +5VR | R.K.B. CABLE-122 | 6 | — | — | — |
| R22 | MAIN CABLE-11 | F | — | — | — |
| ±0V | BLACK | 5 | #18 | 600-0000 | 5 1/2" |
| R12 | MAIN CABLE-7 | E | — | — | — |
| ELN | GRY/ORN | 4 | #24 | 600-2083 | 7 1/2' |
| Ro2 | MAIN CABLE-10 | D | — | — | — |
| ERN | VIO/GRN | 3 | #24 | 600-2075 | 8 1/2' |
| SEARCH | R.K.B. CABLE-10 | C | — | — | — |
| RES | L.K.B. CABLE-13 | 2 | — | — | — |
| SEARCH | R.K.B. CABLE-12 | B | — | — | — |
| NAN | GRY/YEL | 1 | #24 | 600-2084 | 7 1/2' |
| FWD | L.K.B. CABLE-6 | A | — | — | — |



- NOTE:-
- SOLDER LEADS 25 & 26 MAIN CABLE, 3 & 4 RIGHT KEYBOARD CABLE, BLACK LEAD 5, AND RIGHT COAX SHIELD TO TERMINAL.
 - AFTER ALL LEADS ARE SOLDERED TO THE FINGER BOARD AND THE ASSEMBLY HAS BEEN INSPECTED, TIE THE LEADS 3" FROM POINT "X" THEN ADD TWO ONE FOOT PIECES OF 3/16 TUBING AS FOLLOWS. ONE SIDE ALL GRAY WITH TRACER, RIGHT KEYBOARD CABLE AND 30 CONDUCTOR MAIN CABLE. ALL REMAINING LEADS GO INTO THE OTHER TUBING. OMIT BOTH COAX CABLES. TIE TO ABOUT 2" FROM END OF TUBING.
 - NUMBERED CABLE JACKET ENDS AT POINT "Y" RIGHT COAX JACKET AT POINT "Z"
 - FOLD BACK AND TIE UNUSED LEADS.
 - A TOLERANCE OF -1/4, +1/2 TO THE BREAKOUTS AND FANOUTS.



| QTY | DESCRIPTION | W.L. PART NO. | DESCRIPTION |
|-------|-------------|---------------|-----------------|
| 2 | 1/16" CLEAR | 605-0013 | 2' TUBING |
| 11 | #6 GND LUG | 654-1006 | 1 LUG |
| 10 | #6 INT. T. | 653-3001 | 4 WASHER LOCK |
| 9 | #6-32 | 652-3004 | 5 NUT, SH. PAT. |
| 8 | #6 | 653-3000 | 5 WASHER FLAT |
| 7 | 6-32 X 3/8 | 650-3120 | 2 SCREW |
| 6 | 6-32 X 1/2 | 650-3160 | 3 SCREW |
| 5 | 1/4" | 654-1252 | 1 CLAMP |
| 4 | 9/16" | 654-1257 | 2 CLAMP |
| 3 | 3/8" | 654-1254 | 2 CLAMP |
| A/R | ALLOY 63-37 | 620-0202 | SOLDER |
| A/R | 1/2 3" LONG | 600-0000 | WIRE (BLACK) |
| 2 | PLTIM-M | 605-1004 | PAN-TY |
| 1 | 6259 | 510-6259 | FINGER BOARD |
| IDENT | QTY | NAME | W.L. PART NO. |

| REVISION | DATE | BY | APP. | DESCRIPTION |
|----------|---------|-----|------|------------------------|
| 1 | 1-20-74 | ECN | ECN | REVISION PER ECN #3201 |
| 2 | | APP | APP | APP'D JKH |
| 3 | | APP | APP | APP'D JKH |
| 4 | | APP | APP | APP'D JKH |
| 5 | | APP | APP | APP'D JKH |
| 6 | | APP | APP | APP'D JKH |
| 7 | | APP | APP | APP'D JKH |
| 8 | | APP | APP | APP'D JKH |
| 9 | | APP | APP | APP'D JKH |
| 10 | | APP | APP | APP'D JKH |

SEE SHEET 1

SHEETS 1 & 2 ARE "D" SIZE
SHEET 4 IS "E" SIZE

WANG LABORATORIES INC.
TEWKSBURY, MASS.

MODEL NO. 1200
DRAWN 7-5-72
CHECKED 7/1/75
APP. JKH

TITLE
C1, 2 AND 3 WIRING

SHT 3 OF 4
DWG NO. 5776-975
REV. 15